

ALTON
Automation



CAPABLE



SCALABLE



AFFORDABLE

**Modern Control System
Data Acquisition
SCADA System
IIoT**

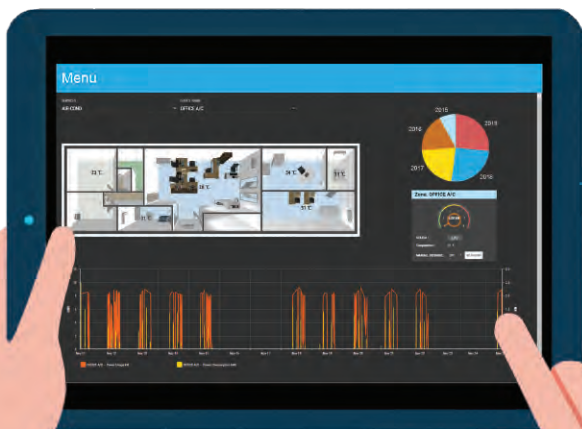
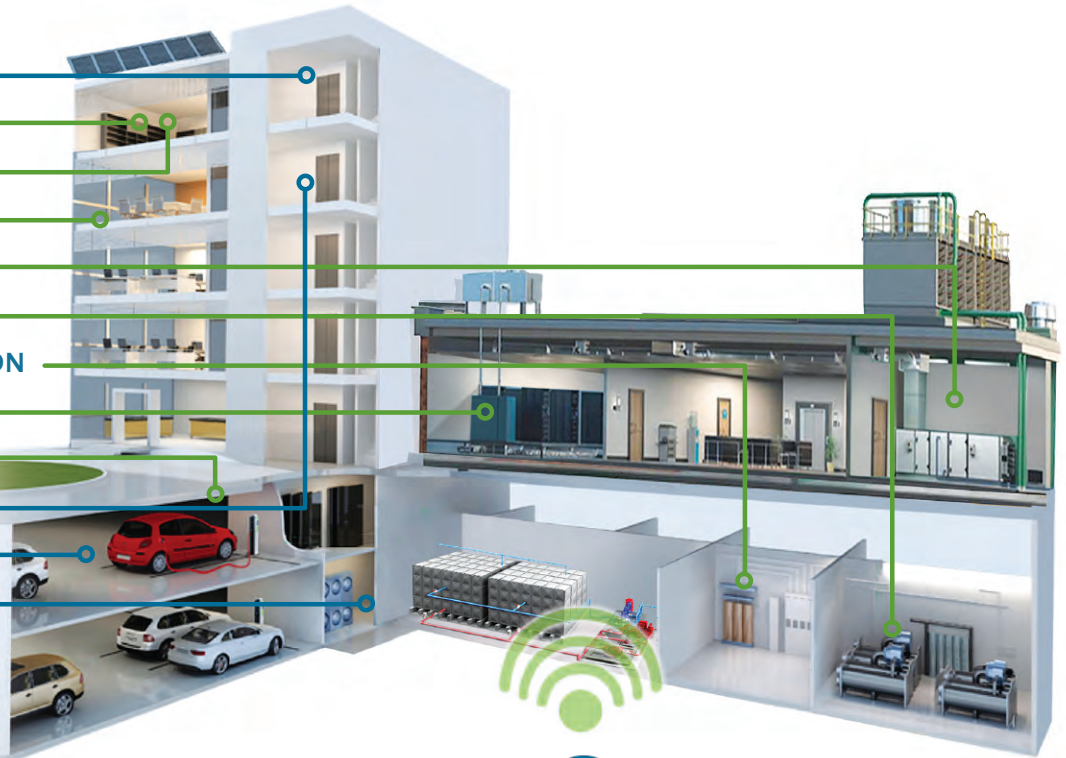
**The smart monitoring &
control system solution**

Product Demonstration



Controlling & Monitoring at your Fingertips

- MOTION SENSOR
- AIR QUALITY
- AIR FLOW
- HUMIDITY
- TEMPERATURE
- PRESSURE
- POWER CONSUMPTION
- WATER DETECTION
- GAS DETECTION
- OCCUPANCY
- LIGHTING
- DOOR SENSOR



GAS
Pressure, Leakage



WATER
Flow Meter, Tank Level, Pumps



HVAC / ACMV
AHU, VAV, FCU, Fans



IoT SENSORS
°C, CO2, RH, PM2.5, CO



LIGHTING CONTROL
Occupancy & Daylight Sensor



ENERGY & UPS
Power Meter, Demand Response



WIRED SENSORS
Door Sensor, Motion Sensor, Transmitter

ALTON Automation

BENEFITS

- ✓ Reduce M & E downtime and repair cost
- ✓ Manage equipment remotely
- ✓ Increase manpower productivity
- ✓ Save lives

SUITABLE FOR

-  Education Sector
-  Agriculture Industry
-  Small / Medium Building



The all-in-one Gateway & Embedded Server Data Acquisition, Logging & Visualisation*

Alton Automation

Integrate + Monitor + Analyze + Visualize + Control + Improve

The ALTON ES (Embedded System) is compact, cost-effective, multi-function gateway and server that allows buildings and industrial systems bi-directional secure connectivity to a centralized cloud or to a direct LAN or Internet connectivity web-based monitoring and control.

With multiple functions, the ALTON ES is the ultimate integration tool for both cloud and standalone applications. ALTON ES runs the software application and comes with all features with no license cost.

ALTON ES is a 100% web-based browser, that enables users to access and control electronic sensors,

devices, databases or web services over multiple protocols simultaneously.

ALTON ES provides an interface with which diverse data sources can be created and configured while providing downstream management of user access, alerts, data logging, alarms and automation. Powerful data visualization tools bring you data to life with *live dashboard that allow you to better analyze and aggregate your data, allowing your users to make more informed decisions.

ALTON ES includes everything you need to build a powerful, scalable and modern system.

Features

BUILT-IN PROTOCOLS*



MASSIVE STORAGE



With multiple options for disk storage the ALTON ES can store up to 2 billion historical readings. With its powerful built-in Time Series database it is fast and efficient.

WEB SERVER & VISUALISATION

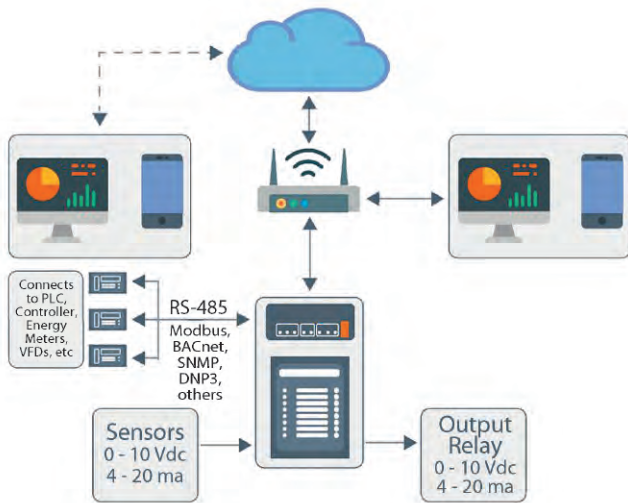
The built-in web server allows full access, configuration and control with a standard web browser. Custom HTML Dashboard and HMI screens can be created with modern, mobile-friendly development frameworks. The included RESTful API can also be used to integrate into third-party systems.

IOT READY

The ALTON ES can be used as stand-alone or as a powerful industrial IoT gateway. Capable of high-speed local data acquisition the ALTON ES also contains a powerful cloud syncing protocol to publish its data to a central server. Both real-time values and historical synchronizations ensure that all data is buffered and sent to the server even through unreliable internet connections or outages.

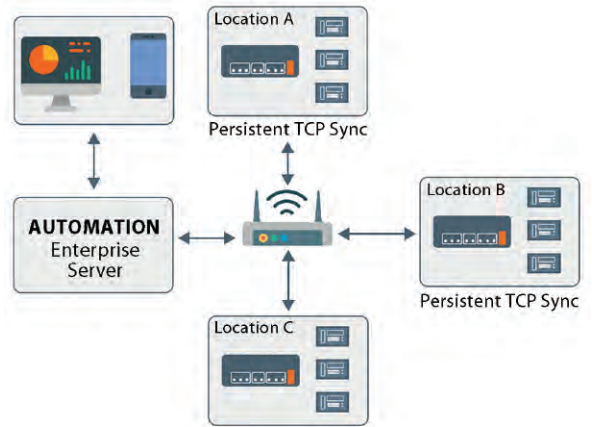
VARIETY OF TOPOLOGIES

STANDALONE DATA LOGGING & CONTROL



ALTON ES can be built into a panel with IO modules and / or a PLC / DDC. Data is gathered by and users connect directly to the local instance to access dashboard, run report and view alarms.

LOCATION WIDE DISTRIBUTED INSTALLATION

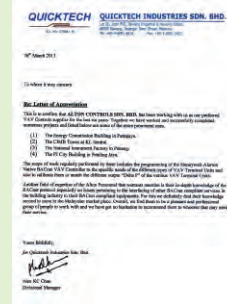


A central ALTON Enterprise server collects data on the local area network while multiple ALTON ES unit collect and forward data into the central ALTON server. This provides a easy unified system where hard to access equipment can bridge local networks and exceed limitation on serial network lengths.

OUR CLIENTS



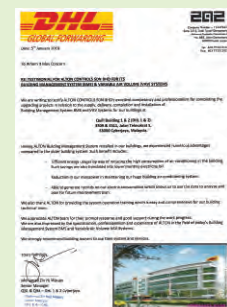
CLIENT TESTIMONIAL LETTERS



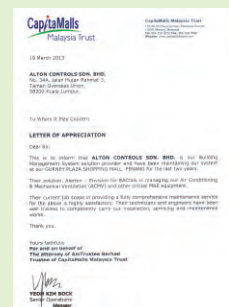
Quicktech Industries Sdn Bhd



Honeywell Engineering Sdn Bhd



DHL



CapitaMalls Malaysia Trust

ALTON CONTROLS SDN BHD (589918-D)

34A, Jalan Hujan Rahmat 3, Taman Overseas Union, 58200 Kuala Lumpur, Malaysia.
Tel: +603 7781 2198 • Fax: +603 7781 5399



www.alton.com.my



<https://www.facebook.com/altoncontrols>