

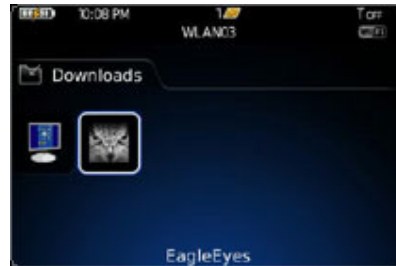


EagleEyes for BlackBerry® mobile phones allows users to have mobile surveillance and access to ALTON DVR network devices at anytime, from anywhere once the phones are connect to Internet.

### EagleEyes Operating Instructions for BlackBerry® mobile phones

(Take BlackBerry® 9000 Bold as an example)

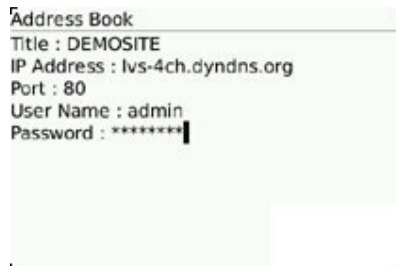
1. Browse to where EagleEyes is installed when the installation is completed, and select to open it.



2. Enter EagleEyes Address Book, and select "add" to add new device connection.



3. Fill in the information needed to access the device you want to add, and return to Address Book.



4. Select the device you just added with the scroll ball, and click it to log in. The live view will be shown with basic control panel.



EagleEyes for iPhone® unleashes the power of mobile surveillance within your iPhone®. Working hand in hand with DVR range units, iPhone® pushes notifications to you even when you are on the road and allows you to instantaneously logging back in your DVR to check in on your treasured property. If you have controllable cameras on site like zoom or PTZ cameras, EagleEyes for iPhone® provides you the most intuitive and convenient control right at your finger tips. EagleEyes for iPhone® is the best compliment to your powerful ALTON surveillance system.

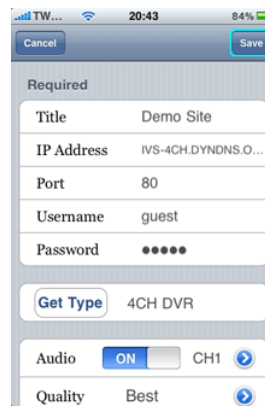
### Installing and configuring EagleEyes for iPhone® (Take “EagleEyes-Plus” as an example)

1. Go to “APP Store” or the link above for program download and installation.

When the installation is completed, run the program to enter the “Addressbook” page similar as shown below. Select “+” on bottom left side to add new connection.

3. Key in the connection information needed, and press “Get Type” to check if you can get the correct product type and image icon.

(A) 16 CH DVR, (B) 8 CH DVR, (C) 4 CH DVR, (D) PTZ IPCAM, (E) Normal IPCAM, (F) Unknown.



**Add:**  
Add a new device connection.



**Edit:**  
Modify the selected item.



**Delete:**  
Remove the selected item.



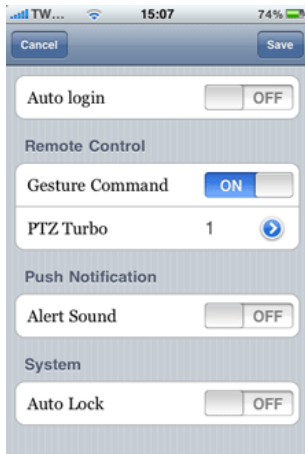
**Flow Counting:**  
Enter the statistics page of Flowing Counting.



**Event List:**  
Enter the event list and search the data you want to play.

4. Press “Save” on the top right side to save and quit.

5. (Optional) To configure more advanced settings, press “Setting” on the top right side. The changes here will apply to all connections in “Addressbook”.



**Auto login:**

Slide to "ON" to automatically log into the last-connected device previously when EagleEyes is activated.

**Gesture Command:**

Slide to "OFF" to disable the direct-touch operations. Users can only operate via touching the function buttons on the screen.

**PTZ Turbo:**

Speed up the PTZ control. For example, when it's set to "2", the program will treat one touch as two touches.

**Alert Sound:**

Set whether to enable (ON) or disable (OFF) the alert sound when push notifications are received.

**Auto Lock:**

Slide to "ON" to disable the iPhone's keylock function in case the connection is off when the keylock is on.

6. Return to "Addressbook", and press the connection you want to log in.

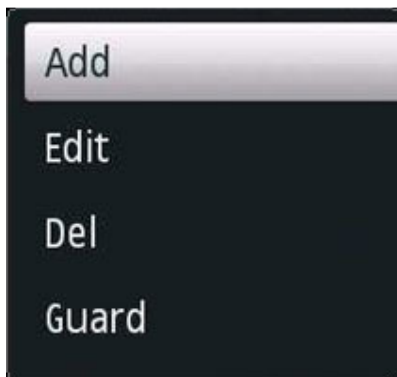


EagleEyes for Symbian mobile phones is designed to satisfy the demand of mobile surveillance. Users are allowed to log in network products as they wish via Internet to monitor the live view remotely and do actions when needed.

### EagleEyes Operating Instructions for Symbian mobile phones

(Take N97 as an example)

1. Click the download link to download and start software installation.
2. When the installation is completed, go to the setting page and select "Add".



3. Enter the information needed to access your device, such as the IP address, user name, password, port number (Not support port 80 ) etc., and exit "Address Book" after all the information needed is filled in.



4. Click the IP address of your device to log in.

5. You will see the live view now.



[www.alton.com.my](http://www.alton.com.my) EAGLE EYES MOBILE SURVEILLANCE

